

## Thank you for purchasing Erica Synths 8 channel SEQUENTIAL SWITCH!

It is the first assembled module from Erica Synths, and it allows you to sequence up to eight sound sources in advanced ways or route one sound source sequentially to eight different sound modifiers – VCFs, waveshapers, VCAs, etc. It has unique control interface that allows you to pause, skip and merge steps, set sequence length, but what really sets it apart from other sequential switches is Gate output – when used with ADSR and VCA, you get really powerful sequencer with real time control over each sound source in the sequence. Use Sequential Switch with random clock source and you get a heart of insane random, self-generating patches!

### Technical characteristics

Panel width.....14HP  
 Module depth.....20mm  
 Max power consumption (all LEDs on) .....52mA@+12V, 13mA@-12V

Press to advance to the next Active step.

Press to reset to the first step.

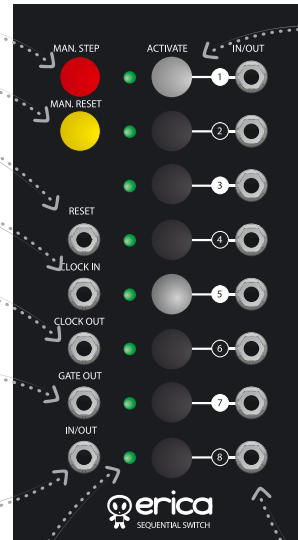
Automatically resets to the first step, when pulse signal appears here.

Apply Clock signal here (+5V pulse). On the each rising edge of the signal, the sequencer will advance to the next active step.

This is Clock Through jack – you can save on clock dividers and use the same Clock signal to control other devices.

+5V 20ms gate appears here on each ACTIVE step. For MERGED steps the Gate length is equal to one step length + 20ms. Use this to initiate ADSR that controls VCA where sequential switch output is routed.

Use this as OUTPUT if you want to take signals from 8 inputs sequentially OR use this as INPUT if you want to route one signal sequentially to one of 8 outputs.



LEDs indicate the state of each step:  
 a. Bright LED – the step is ON  
 b. Half – dimmed LED – the step is PAUSED  
 c. LED is off – the step is SKIPPED  
 d. Blinking LED – currently active step  
 e. Two permanently blinking adjacent LEDs – two steps are merged

9. Use buttons to control step states and sequence length. Initially all steps are ACTIVE.

a. Push the button once and relevant step will go in PAUSE mode – the signal from relevant input will not be routed to the output, but the step will be silenced for one clock period. You can activate the step again by pushing the button once.

b. Push the button quickly twice – the relevant led will go off and the step will be SKIPPED – the sequencer will advance immediately to the next active step.

c. Hold the button and push another button next to it – the steps will be MERGED. In this case the GATE out will be extended to one Clock period. I recommend using signal splitter and plugging in these two adjacent INPUTS the same signal. Exit the MERGE mode by pressing any of merged buttons. Relevant step will become ACTIVE.

SEQUENCE LENGTH (2-8 steps) is determined by the LAST ACTIVE step. So, if you want 6 step long sequence, deactivate steps 7 and 8 (push relevant buttons twice).

Plug in different signal sources, you want to sequence! If you intend to use MERGE mode, it's wise to split same signal to several Inputs. Also, if you wish to route one Input to one of 8 Outputs (one VCO going to several VCFs/waveshapers step by step!), feel free to do so!

## SPECIAL FEATURES

Erica Synths Sequential Switch offers several several **PLAY MODES** that can be activated by knob combinations

While holding MANUAL STEP button push STEP1 button, and the module goes in FORWARD PLAY MODE (this is default mode)

While holding MANUAL STEP button push STEP2 button, and the module goes in REVERSE PLAY mode

While holding MANUAL STEP button push STEP3 button, and the module goes in PING-PONG PLAY mode

While holding MANUAL STEP button push STEP4 button, and the module goes in RANDOM PLAY mode

While holding MANUAL STEP button, press STEP5 button, and the module goes to 8 STEP PING-PONG mode – the last and the first step is played twice

While holding MANUAL STEP button, press STEP6 button, and the module will go to 2xFORWARD and 1xBACK mode

While holding MANUAL STEP button, press STEP7 button, and the module will go to 3xFORWARD and 1xBACK mode

While holding MANUAL STEP button, press STEP8 button, and the module will go to the mode, when EACH STEP IS PLAYED TWICE

### SPECIAL FEATURES.

**Push and hold for 2" Manual Step button**, and the module will go to MANUAL SELECT mode – you can push any channel button and manually select ANY channel, you wish, ignoring the sequence. LEDs on indicates the active channel. Gate Out stays high until you select another channel. If you are patching Sequential Switch output to VCA, controlled by envelope generator, make sure EG is in ADSR mode with sustain on. To exit MANUAL SELECT mode, push Manual Step button promptly.

**When in MANUAL SELECT mode, you can push promptly Manual Reset button**, and module will go in CLOCKED MANUAL SELECT mode. It works similar to Manual select mode, but Gate Out follows the incoming clock. Use this for insane percussion instruments!

**Press Manual Step and Manual Reset buttons simultaneously and hold those for 2"**, and the module will go to PIANO mode – it works similar to Manual Select mode, the Gate Out is high only till you hold the channel button. Patch the module OUT into VCA and Gate Out into ADSR envelope generator, and you have 8 completely different sound keyboard! To exit PIANO mode, push Manual Step button promptly.

### SAFETY INSTRUCTIONS

Please follow the instructions for use of this Erica Synths module below, 'cause only this will guarantee proper operation of the module and ensure warranty from Erica Synths.



Water is lethal for most of the electric devices, unless they are made waterproof. Erica Synths module is NOT intended for use in a humid or wet environment. No liquids or other conducting substances must get into the module. Should this happen, the module should be disconnected from mains power immediately, dried, examined and cleaned by a qualified technician.



Do not expose the module to temperatures above +50° C or below -20° C.



Transport the instrument with modules installed carefully, never let it drop or fall over. Warranty does not apply to modules with visual damages.



The module has to be shipped in the original packaging only. Any module shipped to us for return, exchange and/or warranty repair has to be in its original packaging. All other deliveries will be rejected and returned to you. Make sure you keep the original packaging and technical documentation.

You will find Erica Synths terms of warranty at [www.ericasynths.lv](http://www.ericasynths.lv).

Items for return, exchange and/or warranty repair have to be sent to: Erica Synths Andrejostas Str. 4a, room T8-C, Riga, Latvia, LV-1045

### DISPOSAL

This device complies to the EU guidelines and is manufactured RoHS conforming without use of lead, mercury, cadmium and chrome. Nevertheless, this device is special waste and disposal in household waste is not recommended.

Designed and made in Latvia.

User manual by Girts Ozolins@Erica Synths.

Design by Ieva Andrupe.

Copying, distribution or any commercial use in any way is prohibited and needs the written permission by Erica Synths. Specifications are subject to change without notice.

In case of any questions feel free to contact us via e-mail [info@ericasynths.lv](mailto:info@ericasynths.lv)

Check out other Erica Synths modules & devices at <http://www.ericasynths.lv>