

If you are reading this, most probably, you are about to build Erica Synths DIY MIDI-CV module. This module is 35mm deep, skiff friendly, has solid mechanical construction and doesn't require wiring. Erica Synths Black MIDI-CV is compact, highly accurate and easy to use duophonic MIDI interface. It emulates classical monophonic and duophonic synth behaviour, as well as can be configured for use in two independent MIDI channels. Bonus features – MIDI clock output and analogue glide circuit on both channels.

The DIY MIDI-CV kit comes in three versions:

- 1) 2PCBs + pre-programmed controller chip + connectors + glide potentiometer,
- 2) 2PCBs + pre-programmed controller chip + connectors + glide potentiometer + panel,
- 3) Full kit.

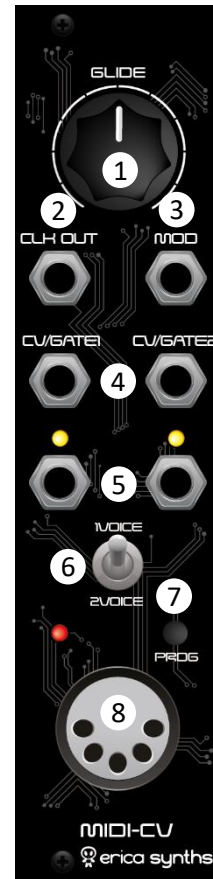
FEATURES:

- Two CV and Gate outputs
- MIDI clock output (4ppq – sequencer friendly)
- Configurable MOD output – modulation wheel or velocity
- Analogue glide on both MIDI channels
- One or two MIDI channel configuration
- One or two voice switch

SPECIFICATIONS:

- CV range 0-8V
- Max CV deviation 0.001V; 1cent
- Gate and Clock level 5V
- Glide time 0 – 2"
- Module width 6HP
- Module depth 35mm
- Power consumption +40mA, -9mA

Setting MIDI channel	<p>Connect MIDI keyboard to the module! Push and hold PROGRAMM button for 2". MIDI LED will start to blink slowly. While holding PROGRAMM button, select midi channel by pushing a key on the keyboard. C of any octave corresponds to MIDI channel 1, C# - channel 2, D – channel 3, etc. Channels 1-12 can be assigned to send midi messages to the module. For two MIDI channel configuration push two keys simultaneously. CV1/Gate1 will be assigned to the lowest midi channel, CV2/Gate2 – to highest. As you release PROGRAMM button, the module will advance to MOD output configuration.</p>
MOD output configuration	<p>In MOD output configuration mode MIDI LED starts to blink faster. If you wish to assign a modulation wheel to MOD output, simply rotate it on the midi controller. If you wish to assign key velocity to the MOD output, push any key on the keyboard. Push PROGRAMM button to confirm, and the module will exit configuration mode.</p>



- 1 Use this knob to set the glide time on the output CV! It affects both channels simultaneously.
- 2 This is 4ppq Clock output – ready to control your sequencers. In two MIDI channel mode make sure, only one MIDI device has MIDI clock activated.
- 3 This is Modulation CV output. You can configure it for modulation wheel CV output or key velocity. Refer to the table below!
- 4 These are CV outputs.
- 5 These are Gate outputs, LEDs indicate active gates.
- 6 This is Voice switch. In one MIDI channel mode you can select between one voice mode (highest note priority) or two voice mode (highest and lowest note priority).
- 7 Push PROGRAMM button promptly to send MIDI panic message. Push and hold the button and you will enter configuration mode. Please, refer to the table on configuration settings.
- 8 This is MIDI input, obviously.