

BLACK FILTER COUPLER

THANK YOU FOR PURCHASING ERICA SYNTHS BLACK SERIES MODULE!

Erica Black Series include high-end, unique functionality and superior quality modules. Only the best, highest quality components are used, all inputs and outputs are protected against undesired overvoltage. When designing Black Series, put design and usability superior. Big knobs are assigned to functions that make difference in sound. Erica Black series consist of range of modules that are needed to put together entire synth. Enjoy!

The **Erica Synths Black Filter Coupler** is a satellite module to the Black High pass VCF and the Black Low Pass VCF. It adds Bandpass and Band Reject filter functionality, both with adjustable center frequency and bandwidth, while both VCFs still can operate on their own. All modules have manual and CV control over all parameters, and that adds unprecedented nuances in sound design in your modular system.

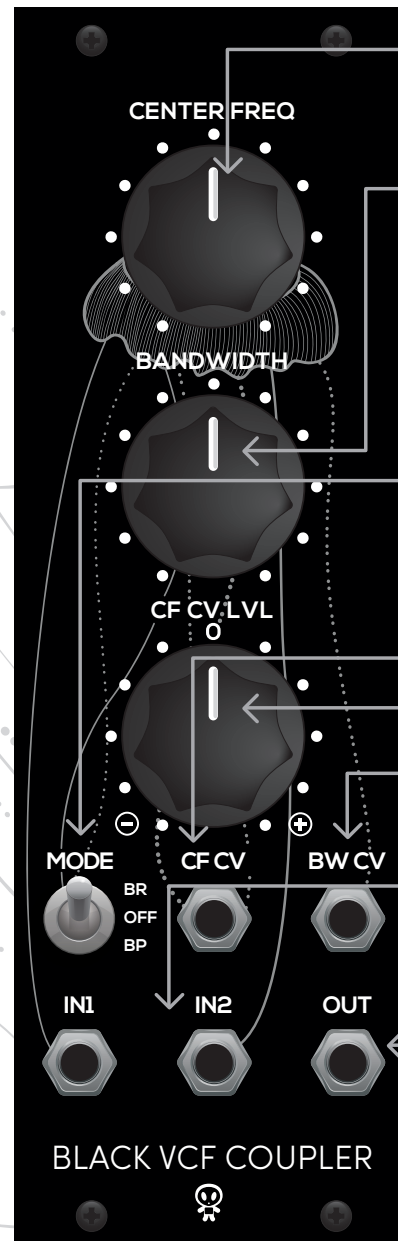
NB! The module is designed to work exclusively with both the Black High pass VCF and the Black Low Pass VCF.

FEATURES:

Bandpass and Band reject filters
Manually adjustable center frequency and bandwidth
Voltage control over center frequency and bandwidth

SPECS:

Audio level	10Vptp
CV level (full span)	-5V - +5V
Power consumption	+25mA, -21mA
Module width	8HP
Module depth	35mm



CENTER FREQ

This is the manual center frequency adjustment. The incoming CV is added to the cutoff knob position.

BANDWIDTH

This is the manual bandwidth adjustment. The incoming CV is added to the cutoff knob position.

CF CV LVL

This is the center frequency CV level attenuverter. Adjust the CV level to your taste!

MODE

This is the filter mode switch. Select among Band Reject, Bandpass and OFF modes. In the OFF mode the Coupler controls over both VCFs are omitted.

CF CV

This is the center frequency CV input.

BW CV

This is the bandwidth CV input.

IN1; IN2

These are audio inputs for bandpass and band reject filter. These are two independent, buffered inputs that are mixed together.

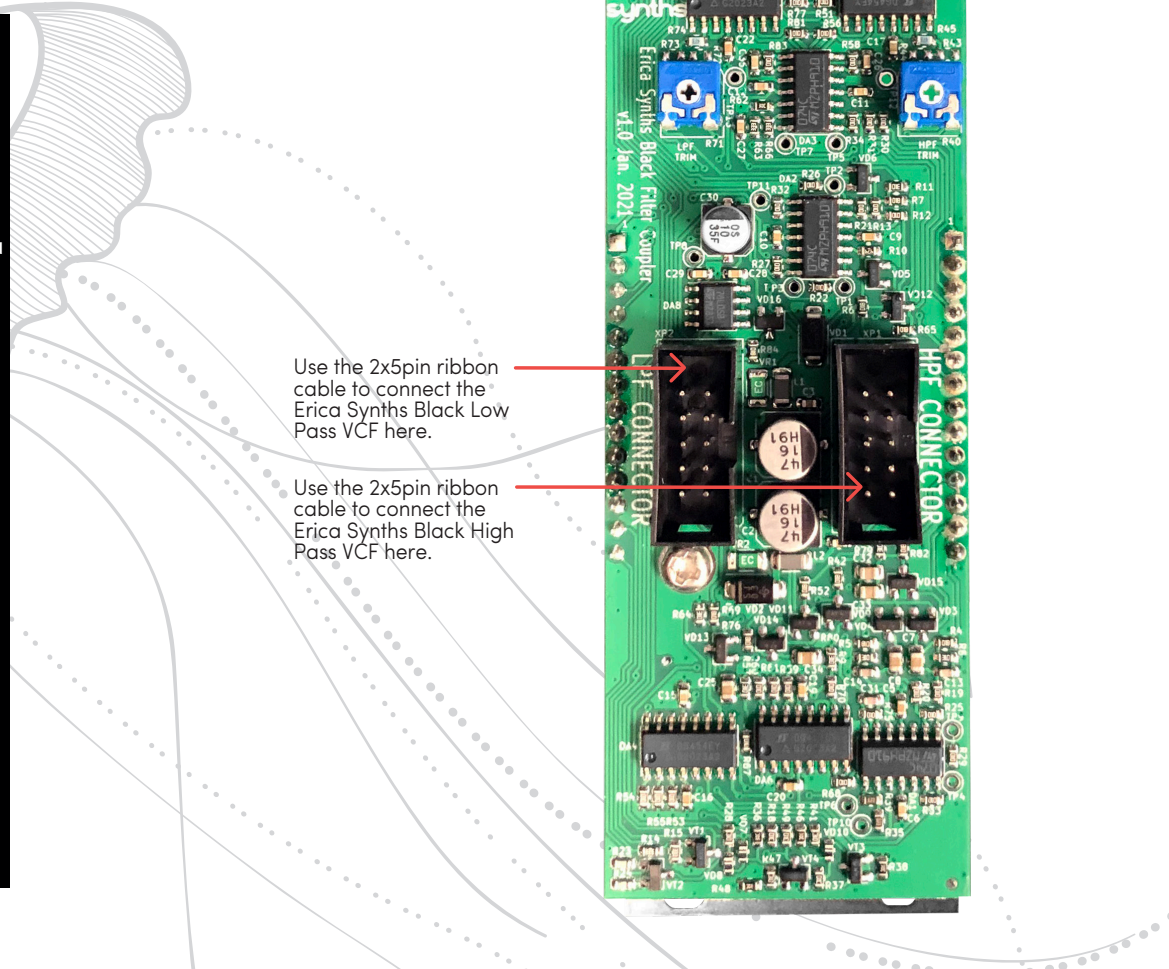
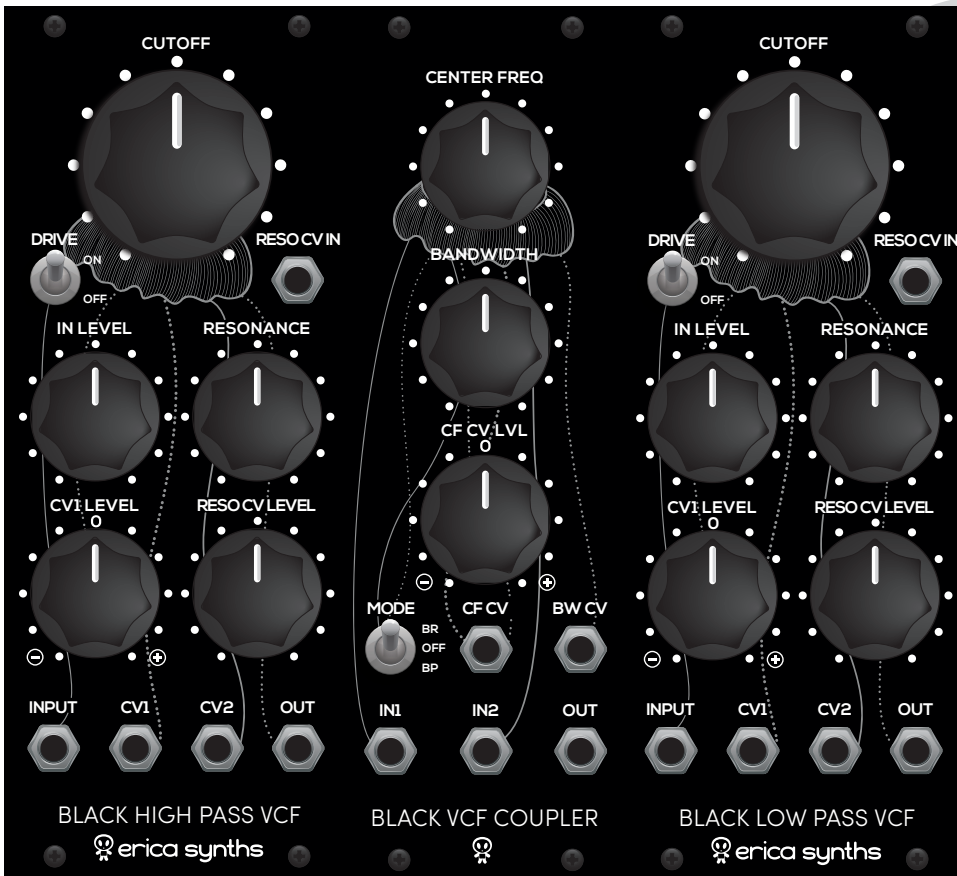
OUT

This is the audio output of the module.

BLACK VCF COUPLER



When used in combination with the Black High Pass VCF and the Black Low Pass VCF, you get a Holy Trinity of VCFs for an ultimate analogue modular system.



SAFETY INSTRUCTIONS

Please follow the instructions for use of the Erica Synths module below, 'cause only this will guarantee proper operation of the module and ensure warranty from Erica Synths.



Water is lethal for most of the electric devices, unless they are made waterproof. This Erica Synths module is NOT intended for use in a humid or wet environment. No liquids or other conducting substances must get into the module. Should this happen, the module should be disconnected from mains power immediately, dried, examined and cleaned by a qualified technician.



Do not expose the module to temperatures above +50° C or below -20° C. If you have transported module in extreme low temperatures, leave it in room temperature for an hour before plugging it in.



Transport the instrument carefully, never let it drop or fall over. Warranty does not apply to modules with visual damages.



The module has to be shipped in the original packaging only. Any module shipped to us for return, exchange and/or warranty repair has to be in its original packaging. All other deliveries will be rejected and returned to you. Make sure you keep the original packaging and technical documentation.



This device complies to the EU guidelines and is manufactured RoHS conforming without use of lead, mercury, cadmium and chrome. Nevertheless, this device is special waste and disposal in household waste is not recommended.

User manual by Girts Ozolins@Erica Synths.
Design by Ineta Briede@Black8.

Copying, distribution or any commercial use in any way is prohibited and needs the written permission by Erica Synths. Specifications are subject to change without notice. In case of any questions, feel free to contact us through www.ericasynths.lv.

You will find Erica Synths terms of warranty at www.ericasynths.lv

Items for return, exchange and/or warranty repair have to be registered at SUPPORT on www.ericasynths.lv and send back to us according to instructions in the support page.