

# BLACK LOW PASS VCF

## THANK YOU FOR PURCHASING ERICA SYNTHS BLACK SERIES MODULE!

Erica Black Series include high-end, unique functionality and superior quality modules. Only the best, highest quality components are used, all inputs and outputs are protected against undesired overvoltage. When designing Black Series, put design and usability superior. Big knobs are assigned to functions that make difference in sound. Erica Black series consist of range of modules that are needed to put together entire synth. Enjoy!

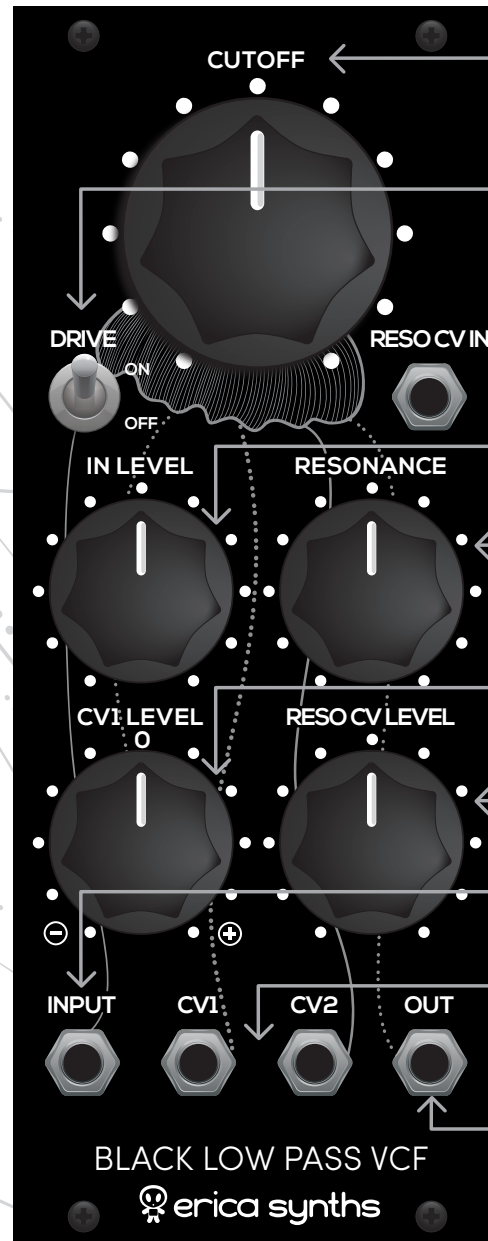
The **Erica Synths Black Low Pass VCF** is designed for analogue purists, who take sound design seriously. It's highly stable, 24dB/oct resonant low pass VCF with voltage control over cutoff (two CV inputs, one is with an attenuverter) and resonance. Bonus features are built in post-filter overdrive circuit with user adjustable drive amount and the Black Filter Coupler connector. When used in combination with the Black High Pass VCF and the Black Filter Coupler, you get a Holy Trinity of VCFs for an ultimate analogue modular system.

### FEATURES:

- Voltage control over cutoff and resonance
- Gain loss compensation on high resonance
- Cutoff CV attenuverter
- Built in adjustable overdrive circuit
- Filter coupler connector

### SPECS:

Audio level	10Vptp
CV level	-10V - +10V
Filter slope	24dB/oct
Power consumption	+25mA, -29mA
Module width	10HP
Module depth	35mm



#### CUTOFF

This is the main control of the module – manual cutoff frequency adjustment. The incoming CV is added to the cutoff knob position.

#### DRIVE

For extreme results, flip the DRIVE switch ON! This will apply post-filter drive. You can preset drive level to your taste by adjusting a trimpot close to the switch on the back side of the module.

#### RESO CV IN

This is the resonance CV input.

#### IN LEVEL

Adjust the audio signal level.

#### RESONANCE

Adjust the resonance level manually. On settings over 1PM the filter will start to self-oscillate. The incoming CV is added to the resonance knob position.

#### CV1 LEVEL

This is cutoff CV attenuverter. Adjust the CV level to your taste!

#### RESO CV LEVEL

Adjust the resonance CV level to your taste.

#### INPUT

Patch your audio signals here.

#### CV1; CV2

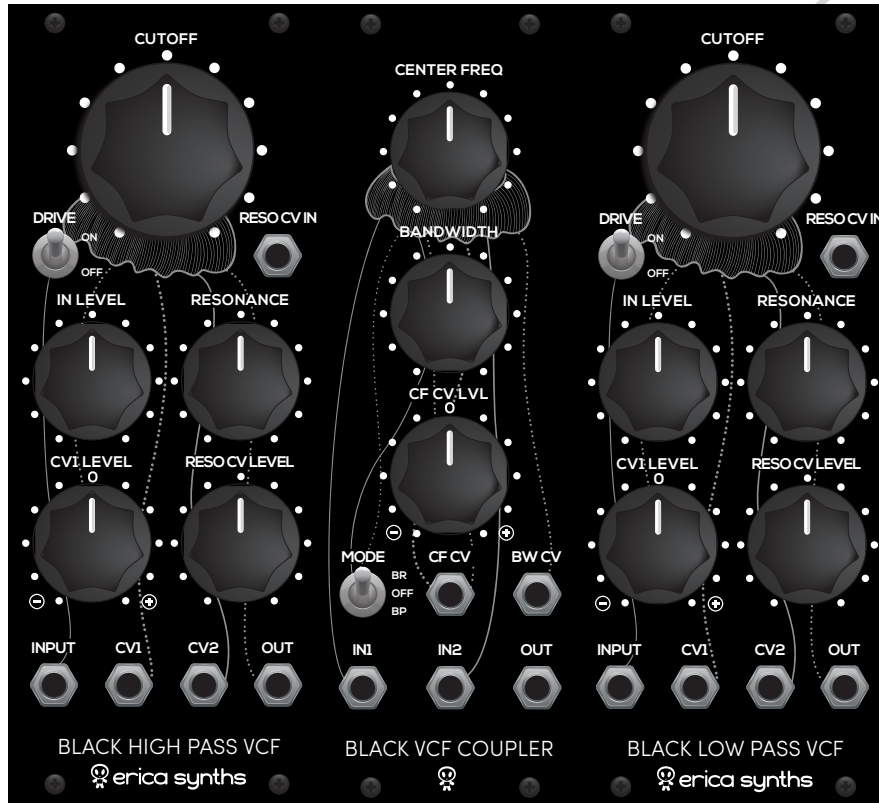
These are the cutoff CV inputs. The CV1 level is adjustable by CV1 LEVEL attenuverter knob, CV2 is applied to the cutoff without attenuation.

#### OUT

This is the audio output of the module.

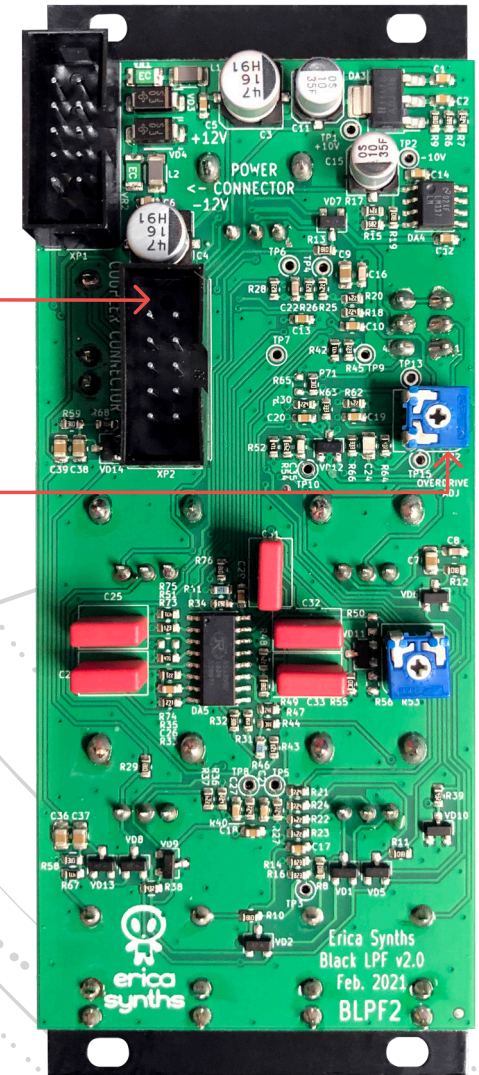
BLACK LOW PASS VCF

The Black Low Pass VCF has a hidden feature – the Black Filter Coupler connector. The Erica Synths Black Filter Coupler is a satellite module for the Black High Pass and the Black Low Pass VCFs, and it adds versatile Bandpass and Band Reject filter functionality to your modular system. Please note, that the Black Filter Coupler works only with Erica Synths modules and you need both Black High Pass and Low Pass VCFs.



Remove the jumper and connect the Erica Synths Black Filter Coupler. 2x5pin ribbon cable is supplied with the Black Filter Coupler module.

Use this trimpot to adjust post-filter overdrive to your taste.



## SAFETY INSTRUCTIONS

Please follow the instructions for use of the Erica Synths module below, 'cause only this will guarantee proper operation of the module and ensure warranty from Erica Synths.



Water is lethal for most of the electric devices, unless they are made waterproof. This Erica Synths module is NOT intended for use in a humid or wet environment. No liquids or other conducting substances must get into the module. Should this happen, the module should be disconnected from mains power immediately, dried, examined and cleaned by a qualified technician.



Do not expose the module to temperatures above +50° C or below -20° C. If you have transported module in extreme low temperatures, leave it in room temperature for an hour before plugging it in.



Transport the instrument carefully, never let it drop or fall over. Warranty does not apply to modules with visual damages.



The module has to be shipped in the original packaging only. Any module shipped to us for return, exchange and/or warranty repair has to be in its original packaging. All other deliveries will be rejected and returned to you. Make sure you keep the original packaging and technical documentation.



This device complies to the EU guidelines and is manufactured RoHS conforming without use of lead, mercury, cadmium and chrome. Nevertheless, this device is special waste and disposal in household waste is not recommended.

User manual by Girts Ozolins@Erica Synths.  
Design by Ineta Briede@Black8.

Copying, distribution or any commercial use in any way is prohibited and needs the written permission by Erica Synths. Specifications are subject to change without notice. In case of any questions, feel free to contact us through [www.ericasynths.lv](http://www.ericasynths.lv).

You will find Erica Synths terms of warranty at [www.ericasynths.lv](http://www.ericasynths.lv)

Items for return, exchange and/or warranty repair have to be registered at SUPPORT on [www.ericasynths.lv](http://www.ericasynths.lv) and send back to us according to instructions in the support page.