

## THANK YOU FOR PURCHASING ERICA SYNTHS BLACK SERIES MODULE!

Erica Black Series include high-end, unique functionality and superior quality modules. Only the best, highest quality components are used, all inputs and outputs are protected against undesired over voltage. When designing Black Series, we did not economy on module width, we put design and usability superior. Big knobs are assigned to functions that make difference in sound. Erica Black series consist of range of modules that are needed to put together entire synth. Enjoy!

*If the doors of perception were cleansed everything would appear to man as it is, infinite.*  
/William Blake/

Erica Black Hole DSP tops up Erica Black series with mind blowing sound effects. Custom effects are designed in close co-operation of Erica Synths team rider KODEK and creator of Spin CAD software Gary Worsham. The module as standard has 16 effects, each with 4 adjustable and CV controllable parameters and CV controlled effect select, but external effect boards (sold sepertely), containing sets of effects, can adapt Erica Black Hole DSP to your way of creating music. Use the module together with Erica Black CV Expander for more delicate CV control over parameters. For effects description, please, refer to info sheet enclosed!

Select 8 effects from each bank with this knob.

Use this knob to reduce clock rate and get vintage tape echo like effects and extreme bitchrush.

Dedicated DRY/WET knob lets you add desired amount of effect instantly.

Signal inputs. The Left input is normaled to the Right, so you can input mono signal and get impressive stereo effect.

Large display indicates active effect.

Use this knob to adjust the first parameter of the effect. Refer to effect table for parameter assigned to this knob.

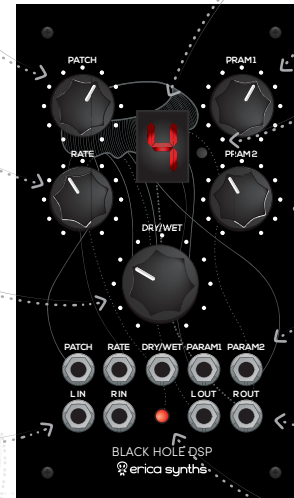
Push this button to switch between effect banks! Red dot indicates that you are in the 2nd bank.

Use this knob to adjust the second parameter of the effect. Refer to effect table for parameter assigned to this knob.

These are CV inputs for each parameter control. Use Erica Black CV Expander for more delicate control over parameters.

Signal outputs. All effects are designed for stereo outputs, but they sound great also mono.

Clipping LED. Adjust input signal so that LED lights up accidentally.



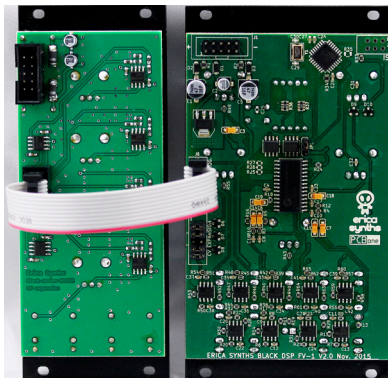
### FEATURES:

- Spin FV-1 chip
- 16 unique custom effects
- Stereo INs and OUTs
- 3 manually and CV controllable parameters
- CV controlled effect select
- Manually and CV controllable clock rate reduction for noisy bitchrush
- 7 segment display for effect select indication
- Audio clipping LED
- Exchangeable external effect boards

### SPECS:

- Input signal amplitude.....-5V - +5V
- Output signal amplitude.....-5V - +5V
- CV level.....-10V - +10V
- Power consumption.....+135mA, -31mA
- Module width.....14HP
- Module depth.....25mm

**NB!** If you consider using Erica Black Hole DSP with Erica Black CV Expander, remove 4 jumpers from Black Hole DSP module and use 10 to 10 pin ribbon cable supplied with Black CV Expander to connect the modules. Make sure the red stripe on ribbon cable is positioned same direction both on CV Expander and Black Hole DSP, eg. on both modules it connects downmost pins.



The module has to be shipped in the original packaging only. Any module shipped to us for return, exchange and/or warranty repair has to be in its original packaging. All other deliveries will be rejected and returned to you. Make sure you keep the original packaging and technical documentation.

You will find Erica Synths terms of warranty at [www.ericasynths.lv](http://www.ericasynths.lv).

Items for return, exchange and/or warranty repair have to be sent to: Erica Synths, Andrejostas Str. 12, Riga, Latvia, LV-1045

## SAFETY INSTRUCTIONS

Please follow the instructions for use of this Erica Synths module below, 'cause only this will guarantee proper operation of the module and ensure warranty from Erica Synths.



Water is lethal for most of the electric devices, unless they are made waterproof. Erica Synths module is NOT intended for use in a humid or wet environment. No liquids or other conducting substances must get into the module. Should this happen, the module should be disconnected from mains power immediately, dried, examined and cleaned by a qualified technician.



Do not expose the module to temperatures above +50° C or below -20° C.



Transport the instrument with modules installed carefully, never let it drop or fall over. Warranty does not apply to modules with visual damages.

## DISPOSAL

This device complies to the EU guidelines and is manufactured RoHS conforming without use of lead, mercury, cadmium and chrome. Nevertheless, this device is special waste and disposal in household waste is not recommended.

Designed and made in Latvia.

User manual by Girts Ozolins@Erica Synths.

Design by Ieva Andrupe.

Copying, distribution or any commercial use in any way is prohibited and needs the written permission by Erica Synths. Specifications are subject to change without notice. In case of any questions feel free to contact us via e-mail [info@ericasynths.lv](mailto:info@ericasynths.lv)

Check out other Erica Synths modules & devices at [www.ericasynths.lv](http://www.ericasynths.lv)